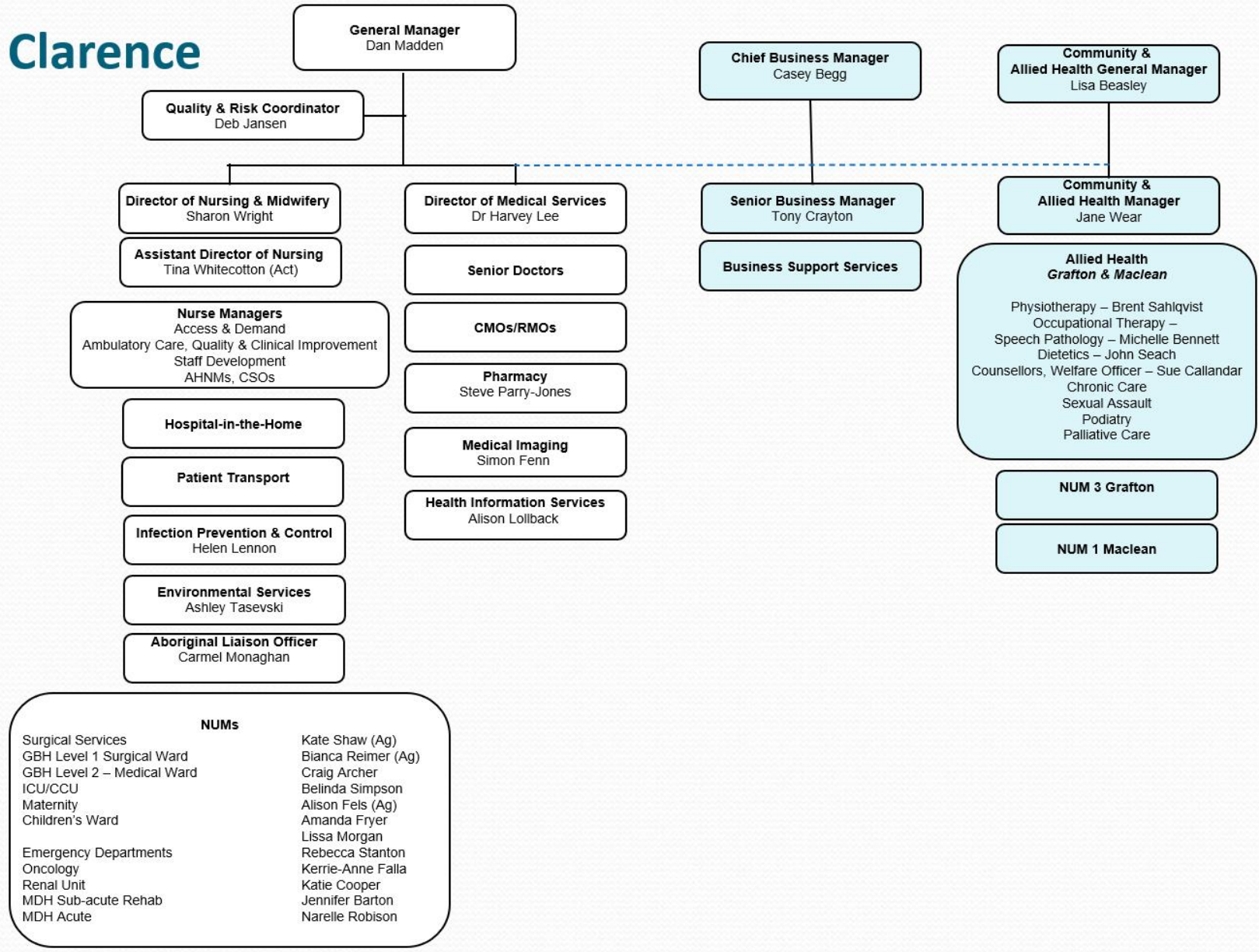


Clarence



NUMs	
Surgical Services	Kate Shaw (Ag)
GBH Level 1 Surgical Ward	Bianca Reimer (Ag)
GBH Level 2 – Medical Ward	Craig Archer
ICU/CCU	Belinda Simpson
Maternity	Alison Fels (Ag)
Children's Ward	Amanda Fryer
	Lissa Morgan
Emergency Departments	Rebecca Stanton
Oncology	Kerrie-Anne Falla
Renal Unit	Katie Cooper
MDH Sub-acute Rehab	Jennifer Barton
MDH Acute	Narelle Robison